

Welcome to the 2015 Blueprint Hospital Service Area (HSA) Profile from the Blueprint for Health, a state-led initiative transforming the way that health care and comprehensive health services are delivered in Vermont. The Blueprint is leading a transition to an environment where all Vermonters have access to a continuum of seamless, effective, and preventive health services.

Blueprint HSA Profiles are based primarily on data from Vermont's all-payer claims database, the Vermont Health Care Uniform Reporting and Evaluation System (VHCURES). Data include all covered commercial and Full Medicaid members attributed to Blueprint practices that began participating on or before December 31, 2015.

The HSA Profile for the adult population covers members ages 18 years and older; pediatric profiles cover members between the ages of 1 and 17 years. Practices have been rolled up to the HSA level.

Utilization and expenditure rates presented in these profiles have been risk adjusted for demographic and health status differences among the reported populations.

This reporting includes only members with a visit to a primary care physician, as identified in VHCURES claims data, during the current reporting year or the prior year. Rates for HSAs reporting fewer than 30 members for a measure are not presented in alignment with NCQA HEDIS guidelines.

The HSA Profile includes Accountable Care Organization (ACO) core measures based on VHCURES and the Blueprint clinical data registry.

Demographics & Health Status

	HSA	Statewide
Average Members	2,986	75,161
Average Age	9.1	9.1
% Female	49.1	48.8
% Medicaid	75.4	56.4
% with Selected Chronic Conditions	14.8	15.4
Health Status (CRG)		
% Healthy	72.2	72.5
% Acute or Minor Chronic	15.3	15.4
% Moderate Chronic	10.6	9.9
% Significant Chronic	1.6	2.0
% Cancer or Catastrophic	0.3	0.2

Table 1: This table provides comparative information on the demographics and health status of the HSA and of the state as a whole. Included measures reflect the types of information used to generate adjusted rates: age, gender, and health status.

Average Members serves as this table's denominator and adjusts for partial lengths of enrollment during the year. In addition, special attention has been given to adjusting for Medicaid. This includes adjustment for each member's enrollment in Medicaid, the member's practice's percentage of membership that is Medicaid, and the degree to which the member required special Medicaid services that are not found in commercial populations (e.g., day treatment, residential treatment, case management, school-based services, and transportation).

The % with Selected Chronic Conditions measure indicates the proportion of members identified through the claims data as having one or more of eight selected chronic conditions: asthma, chronic obstructive pulmonary disease, congestive heart failure, coronary heart disease, hypertension, diabetes, depression, and attention deficit disorder.

The Health Status (CRG) measure aggregates 3M™ Clinical Risk Grouper (CRG) classifications for the year for the purpose of generating adjusted rates. Aggregated risk classification groups include: Healthy, Acute (e.g., ear, nose, throat infection) or Minor Chronic (e.g., minor chronic joint pain), Moderate Chronic (e.g., diabetes), Significant Chronic (e.g., diabetes and CHF), and Cancer (e.g., breast cancer, colorectal cancer) or Catastrophic (e.g., HIV, muscular dystrophy, cystic fibrosis). CRG identification was enhanced using additional diagnostic and pharmacy information for CY2015 reporting, resulting in fewer healthy members and more members with chronic and other conditions.

Total Expenditures per Capita

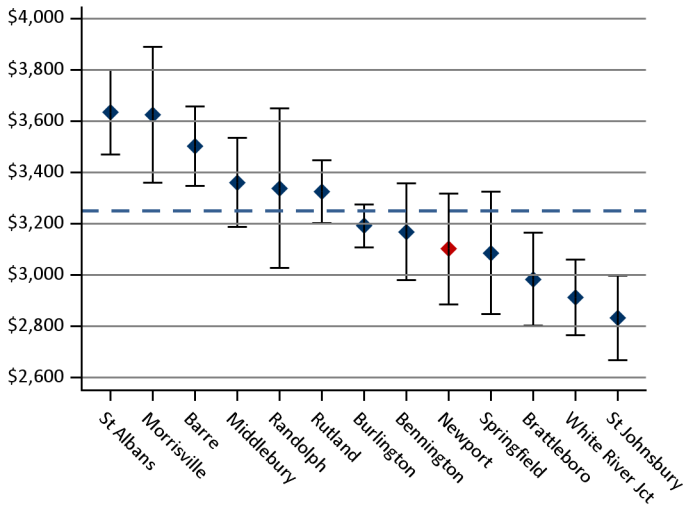


Figure 1: Presents annual risk-adjusted rates, including 95% confidence intervals, with expenditures capped statewide for outlier patients. Expenditures include both plan payments and member out-of-pocket payments (i.e., copay, coinsurance, and deductible). The blue dashed line indicates the statewide average.

Total Expenditures per Capita by Major Category

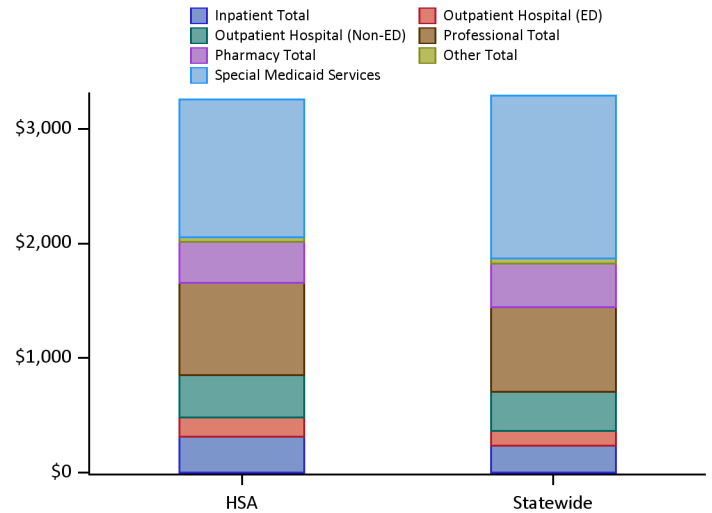


Figure 2: Presents annual risk-adjusted rates for the major components of cost (as shown in Figure 1) with expenditures capped statewide for outlier patients. Some services provided by Medicaid (e.g., case management, transportation) are reported separately as Special Medicaid Services (SMS).

Total Expenditures per Capita (Excluding SMS)

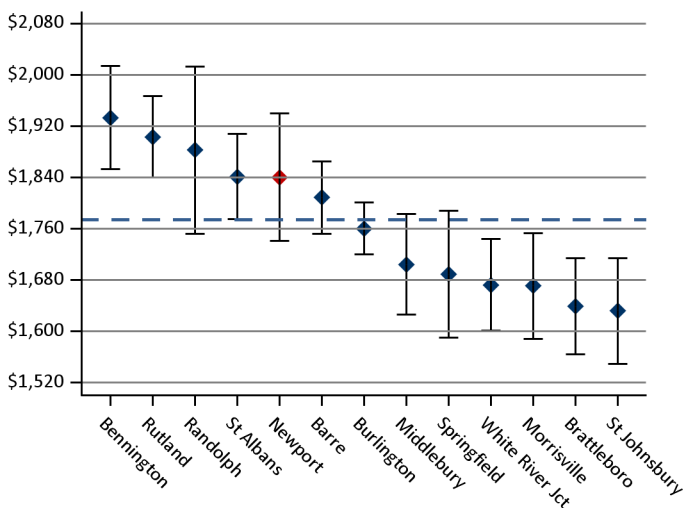


Figure 3: Presents annual risk-adjusted rates, including 95% confidence intervals, with expenditures capped statewide for outlier patients. Expenditures include both plan payments and member out-of-pocket payments (i.e., copay, coinsurance, and deductible) and exclude Special Medicaid Services. The blue dashed line indicates the statewide average.

Total Resource Use Index (RUI) (Excluding SMS)

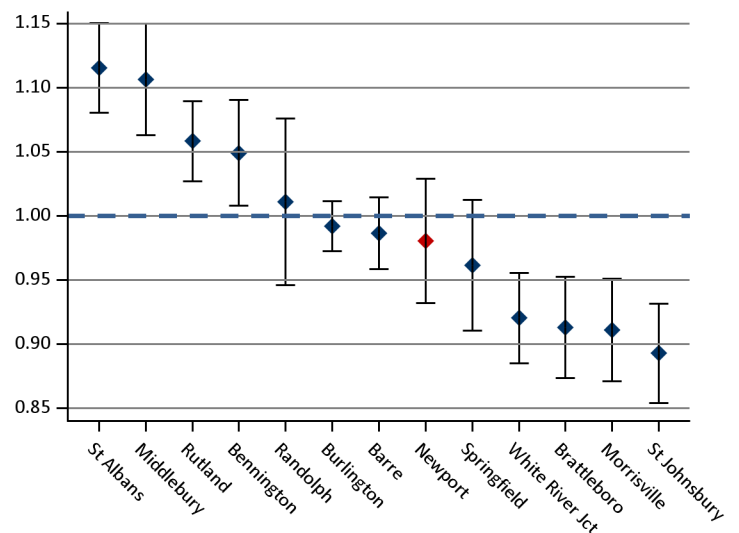


Figure 4: Presents annual risk-adjusted rates, including 95% confidence intervals. Since price per service varies widely, a measure of expenditures based on resource use — Total Resource Use Index (RUI) — is included. RUI reflects an aggregated capped cost based on utilization and intensity of services across major components of care and excludes Special Medicaid Services. The HSAs are indexed to the statewide average (1.00), which is indicated by the blue dashed line.

Annual Total Expenditures per Capita vs. Resource Use Index (RUI)

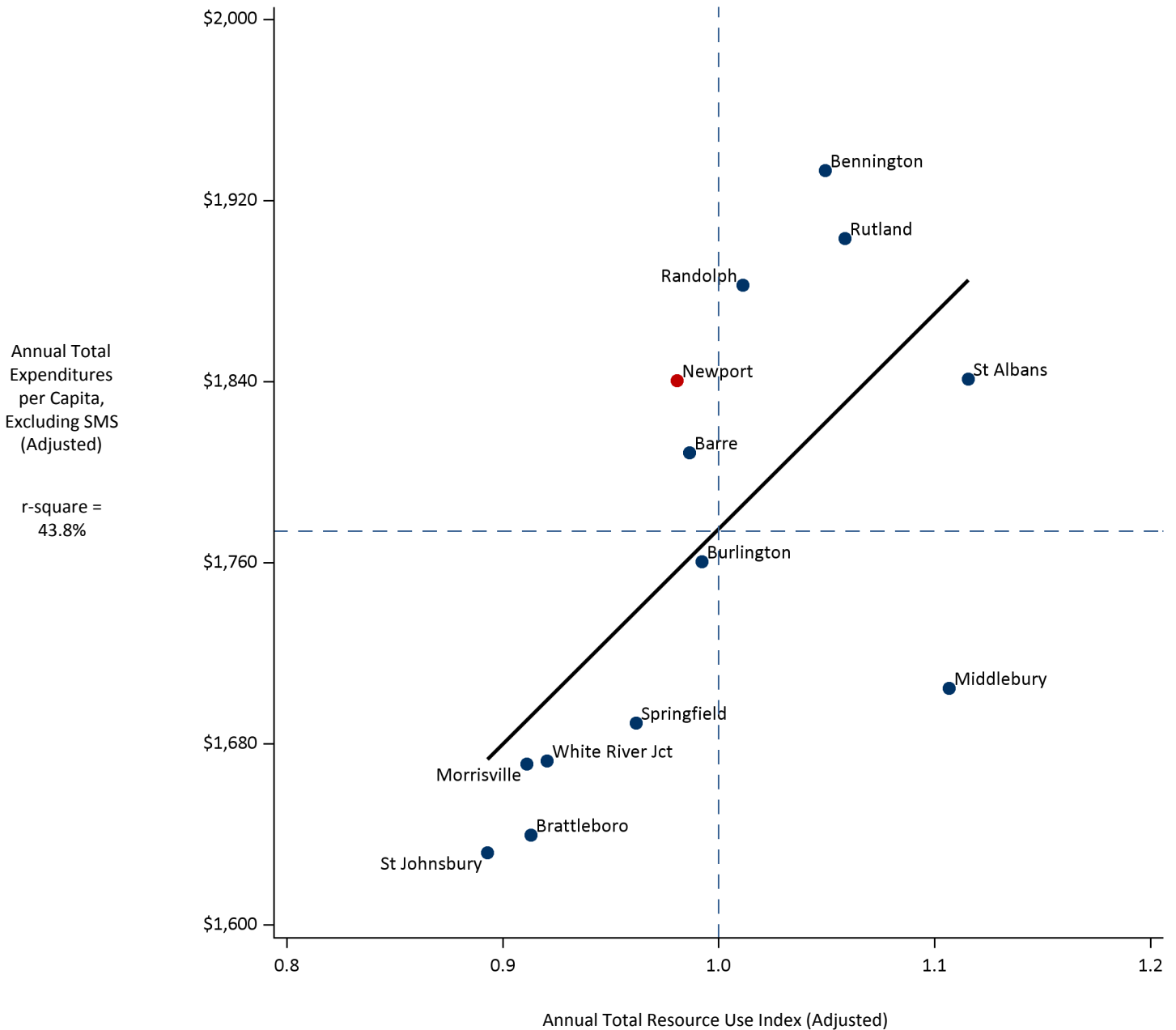
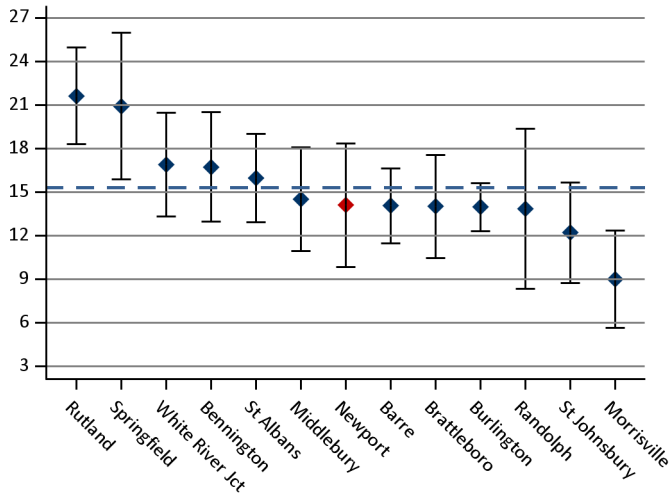


Figure 5: This graphic demonstrates the relationship between risk-adjusted expenditures excluding SMS and risk-adjusted utilization for each of the HSAs in Vermont. This graphic illustrates the HSA's risk-adjusted rate (i.e., the red dot) compared to those of all other HSAs statewide (i.e., the blue dots). The dashed lines show the average expenditures per capita and average Resource Use Index statewide (i.e., 1.0). HSAs with higher expenditures and utilization are in the upper right-hand quadrant while HSAs with lower expenditures and utilization are in the lower left-hand quadrant. An RUI value greater than 1.0 indicates higher than average utilization; conversely, a value lower than 1.0 indicates lower than average utilization. A trend line has been included in the graphic, which demonstrates that, in general, HSAs with higher risk-adjusted utilization had higher risk-adjusted expenditures.

Legend

- Newport
- All other Blueprint HSAs statewide

Inpatient Discharges



Outpatient ED Visits

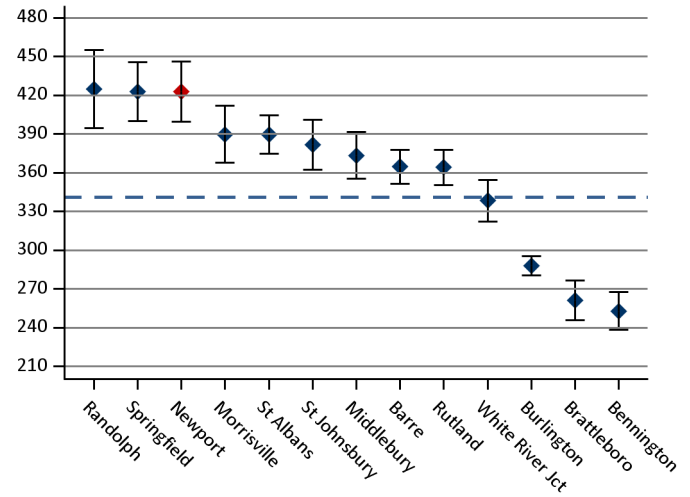


Figure 6: Presents annual risk-adjusted rates, including 95% confidence intervals, of inpatient discharges per 1,000 members. Additional detail measures for inpatient utilization — Inpatient Days, and Preventive Quality Indicators — can be found in Table 4. The blue dashed line indicates the statewide average.

Figure 7: Presents annual risk-adjusted rates, including 95% confidence intervals, of outpatient emergency department (ED) visits per 1,000 members. An additional detail measure — Outpatient Potentially Avoidable ED Visits — can be found in Table 4. The blue dashed line indicates the statewide average.

Advanced Imaging (MRIs, CT Scans)

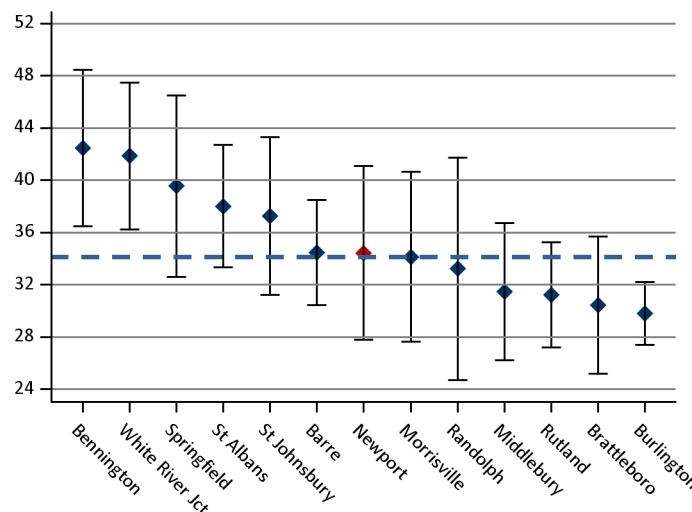


Figure 8: Presents annual risk-adjusted rates, including 95% confidence intervals, of advanced imaging diagnostic tests (i.e., magnetic resonance imagings (MRIs) and computed tomography (CT) scans) per 1,000 members. The blue dashed line indicates the statewide average.

Well-Child Visits

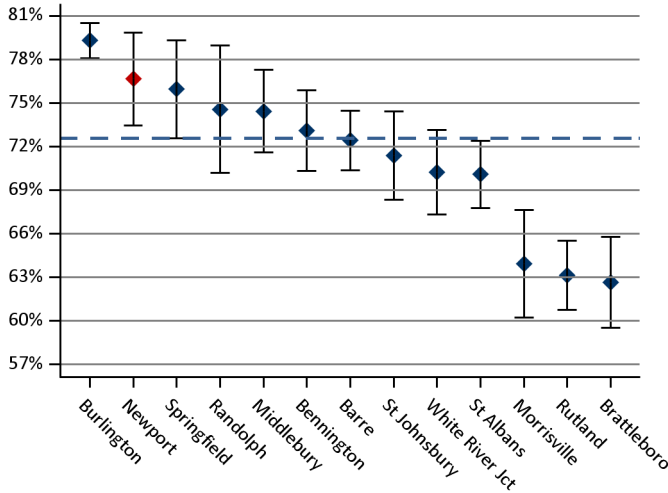


Figure 9: Presents the proportion, including 95% confidence intervals, of members, ages 3–6 years, who received one or more well-child visits during the measurement year. The blue dashed line indicates the statewide average.

Adolescent Well-Care Visits (Core-2)

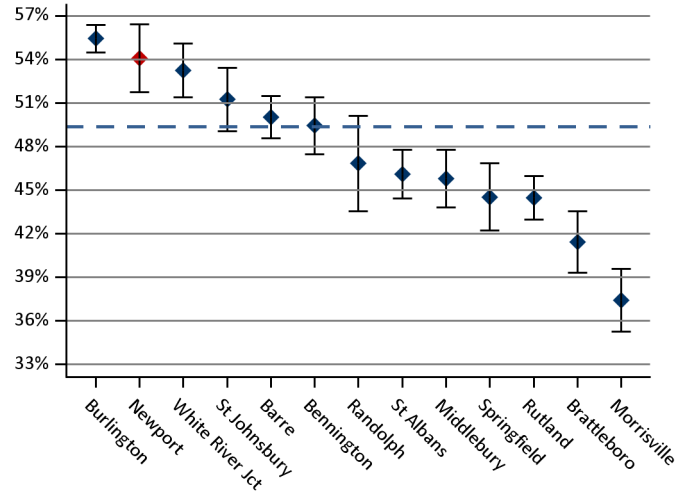


Figure 10: Presents the proportion, including 95% confidence intervals, of members, ages 12–21 years, who received one or more well-care visits with a primary care practitioner or OB/GYN during the measurement year. (Note that, due to the age ranges for this ACO measure, members above the age of 17 years, not typically represented in pediatric profiles, are included in these rates.) The blue dashed line indicates the statewide average.

Developmental Screening in First 3 Years of Life (Core-8)

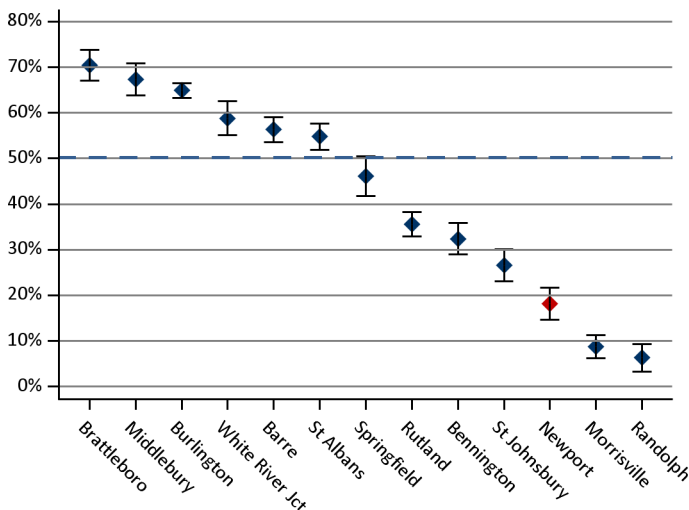


Figure 11: Presents the proportion, including 95% confidence intervals, of continuously enrolled children screened for risk of developmental, behavioral, and social delays using a standardized screening tool in each of the first three years of life. The blue dashed line indicates the statewide average.

Chlamydia Screening in Women (Core-7)

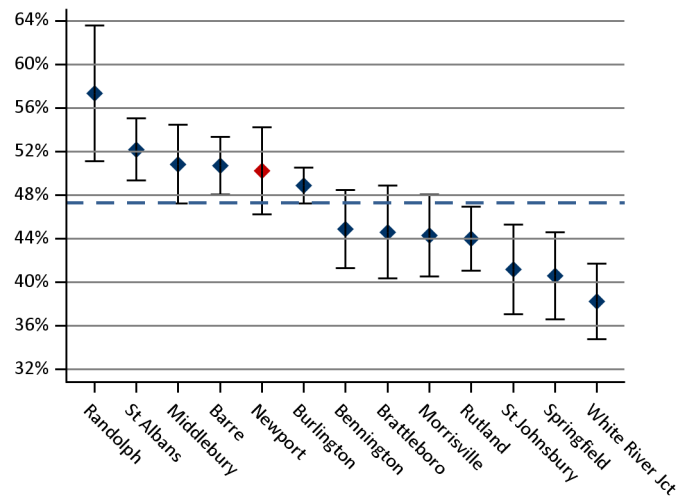


Figure 12: Presents the proportion, including 95% confidence intervals, of continuously enrolled females, ages 16–24 years, who were identified as sexually active and who had at least one test for chlamydia during the measurement year. (Note that, due to the age ranges for this ACO measure, females above the age of 17 years, not typically represented in pediatric profiles, are included in these rates.) The blue dashed line indicates the statewide average.

Appropriate Testing for Pharyngitis (Core-13)

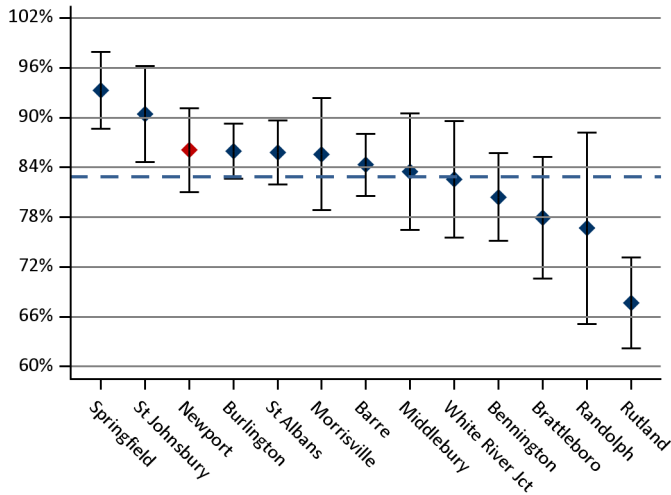


Figure 13: Presents the proportion, including 95% confidence intervals, of children, ages 2–17 years, who were diagnosed with pharyngitis, dispensed an antibiotic, and received a Group A streptococcus (strep) test for the episode. A higher rate represents appropriate testing for children with pharyngitis. The blue dashed line indicates the statewide average.

Appropriate Treatment for Upper Respiratory Infection

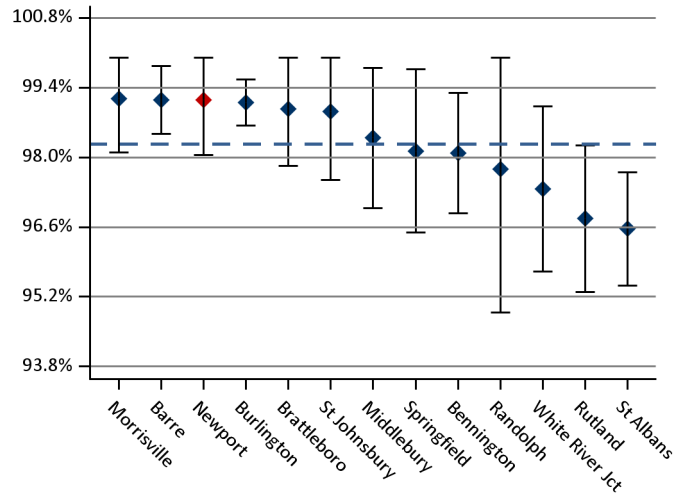


Figure 14: Presents the proportion, including 95% confidence intervals, of children, ages 1–17 years, who were diagnosed with upper respiratory infection (URI) and were not dispensed an antibiotic prescription. A higher rate indicates appropriate treatment of children with URI (i.e., the proportion for whom antibiotics were not prescribed). The blue dashed line indicates the statewide average.

The following tables provide greater detail on the annual rates presented in the preceding figures.

Table 2. Expenditure Measures (Adjusted)

Measure	HSA			Statewide		
	Rate per Capita	95% LCL	95% UCL	Rate per Capita	95% LCL	95% UCL
Total	\$3,102	\$2,886	\$3,318	\$3,251	\$3,206	\$3,295
Inpatient Total	\$317	\$121	\$513	\$233	\$207	\$259
Inpatient Mental Health	\$27	\$0	\$92	\$86	\$71	\$101
Inpatient Maternity	\$7	\$0	\$22	\$3	\$2	\$4
Inpatient Surgical	\$173	\$36	\$310	\$81	\$62	\$99
Inpatient Medical	\$145	\$31	\$260	\$69	\$57	\$80
Outpatient Total	\$529	\$475	\$584	\$475	\$465	\$484
Outpatient Hospital Mental Health	\$6	\$3	\$9	\$13	\$12	\$14
Outpatient Hospital ED	\$163	\$145	\$182	\$129	\$126	\$132
Outpatient Hospital Surgery	\$151	\$116	\$186	\$109	\$102	\$115
Outpatient Hospital Radiology	\$69	\$52	\$85	\$62	\$59	\$65
Outpatient Hospital Laboratory	\$37	\$30	\$44	\$45	\$44	\$47
Outpatient Hospital Pharmacy	\$25	\$16	\$34	\$15	\$13	\$17
Outpatient Hospital Other	\$72	\$55	\$90	\$100	\$97	\$104
Professional Non-Mental Health Total	\$652	\$630	\$674	\$569	\$564	\$574
Professional Physician Total	\$387	\$371	\$403	\$391	\$388	\$395
Professional Physician Inpatient	\$24	\$8	\$39	\$18	\$15	\$21
Professional Physician Outpatient Facility	\$52	\$42	\$62	\$71	\$70	\$73
Professional Physician Office Visit	\$300	\$290	\$309	\$269	\$267	\$271
Professional Non-Physician	\$267	\$255	\$279	\$178	\$175	\$180
Professional Mental Health Provider	\$150	\$133	\$167	\$164	\$160	\$168
Pharmacy Total	\$357	\$324	\$390	\$383	\$377	\$389
Pharmacy Psych Medication	\$80	\$62	\$97	\$142	\$138	\$146
Other Total	\$41	\$32	\$50	\$41	\$38	\$43
Special Medicaid Services	\$1,204	\$1,030	\$1,379	\$1,425	\$1,386	\$1,464
Mental Health Substance Combined*	\$245	\$211	\$279	\$365	\$356	\$374

* The *Mental Health Substance Combined* measure is the sum of all expenditures associated with medical and pharmacy services for mental health / substance abuse.

Table 3. Total Resource Use Index (RUI) (Adjusted)

Measure	HSA			Statewide		
	Index Ratio	95% LCL	95% UCL	Index Ratio	95% LCL	95% UCL
Total	0.98	0.93	1.03	1.00	0.99	1.01
Inpatient	1.31	0.53	2.08	1.00	0.90	1.10
Outpatient Facility	0.95	0.85	1.05	1.00	0.98	1.02
Professional	1.08	1.04	1.12	1.00	0.99	1.01
Pharmacy	0.83	0.75	0.92	1.00	0.98	1.02

Table 4. Utilization Measures (Adjusted)

Measure	HSA			Statewide		
	Rate per 1,000	95% LCL	95% UCL	Rate per 1,000	95% LCL	95% UCL
Inpatient Discharges	14.1	9.9	18.4	15.3	14.4	16.2
Inpatient Days	117.1	104.9	129.4	114.9	112.5	117.4
Outpatient ED Visits	422.8	399.5	446.1	341.0	336.8	345.2
Outpatient Potentially Avoidable ED Visits	123.3	110.7	135.9	74.3	72.3	76.2
Non-Hospital Outpatient Visits	5,349.8	5,266.9	5,432.8	5,370.7	5,354.1	5,387.2
Primary Care Encounters	3,466.7	3,399.9	3,533.5	3,318.6	3,305.6	3,331.6
Medical Specialist Encounters	210.8	194.3	227.3	365.0	360.6	369.3
Surgical Specialist Encounters	302.6	282.9	322.4	266.7	263.0	270.4
Standard Imaging	275.0	256.2	293.8	278.3	274.5	282.1
Advanced Imaging	34.4	27.8	41.1	34.1	32.8	35.5
Echography	40.9	33.6	48.2	48.5	46.9	50.1
Colonoscopy	1.6	0.2	3.0	1.6	1.3	1.9

Table 5. Effective, Preventive, & ACO Measures

Measure	HSA				Statewide			
	N	Rate %	95% LCL	95% UCL	N	Rate %	95% LCL	95% UCL
Well-Child Visits	703	77%	73%	80%	16,628	73%	72%	73%
Well-Child Visits - Commercial	126	73%	65%	81%	6,179	78%	77%	79%
Well-Child Visits - Medicaid	577	77%	74%	81%	10,449	69%	68%	70%
Adolescent Well-Care Visit (Core-2)	1,762	54%	52%	56%	41,632	49%	49%	50%
Adolescent Well-Care Visit - Commercial	589	54%	50%	58%	21,512	53%	52%	53%
Adolescent Well-Care Visit - Medicaid	1,173	54%	51%	57%	20,120	46%	45%	47%
Developmental Screening in First 3 Years of Life (Core-8)	500	18%	15%	22%	12,609	50%	49%	51%
Developmental Screening - Commercial	86	23%	14%	33%	4,444	59%	57%	60%
Developmental Screening - Medicaid	414	17%	13%	21%	8,165	46%	44%	47%
Chlamydia Screening in Women (Core-7)	617	50%	46%	54%	12,908	47%	46%	48%
Chlamydia Screening in Women - Commercial	231	49%	43%	56%	7,360	45%	44%	46%
Chlamydia Screening in Women - Medicaid	386	51%	46%	56%	5,548	50%	49%	52%
Appropriate Testing for Pharyngitis (Core-13)	201	86%	81%	91%	2,725	83%	81%	84%
Appropriate Testing for Pharyngitis - Commercial	34	74%	57%	90%	944	83%	81%	86%
Appropriate Testing for Pharyngitis - Medicaid	167	89%	84%	94%	1,781	83%	81%	84%
Appropriate Treatment for Upper Respiratory Infection	352	99%	98%	100%	7,522	98%	98%	99%
Appropriate Treatment for Upper Respiratory Infection - Commercial	46	100%	99%	100%	2,158	98%	97%	98%
Appropriate Treatment for Upper Respiratory Infection - Medicaid	306	99%	98%	100%	5,364	98%	98%	99%

Table 6. ACO Measure Reference Table

VT Measure ID	Medicare Shared Savings Program Measure ID	Measure Name	Nationally Recognized/ Endorsed	Included in HSA Profile?	Measure Description
Core-1		Plan All-Cause Readmissions	NQF #1768, HEDIS measure	Adult	For members 18 years and older, the number of acute inpatient stays during the measurement year that were followed by an acute readmission for any diagnosis within 30 days.
Core-2		Adolescent Well-Care Visit	HEDIS measure	Pediatric	The percentage of members 12-21 years who had at least one comprehensive well-care visit with a PCP or OB/GYN during the measurement year.
Core-3	MSSP-29	Ischemic Vascular Disease (IVD): Complete Lipid Panel (Screening Only)	NQF #0075, NCQA	Adult	The percentage of members 18-75 years who were discharged alive for acute myocardial infarction, coronary artery bypass grafting, or percutaneous coronary intervention in the year prior to the measurement year or who had a diagnosis of Ischemic Vascular Disease during the measurement year and one year prior, who had LDL-C screening.
Core-4		Follow-up after Hospitalization for Mental Illness, 7 Day	NQF #0576, HEDIS measure	Adult	The percentage of discharges for members 6 years and older who were hospitalized for treatment of selected mental illness diagnoses and who had an outpatient visit, an intensive outpatient encounter, or partial hospitalization with a mental health practitioner.
Core-5		Initiation & Engagement of Alcohol and Other Drug Dependence Treatment (a) Initiation, (b) Engagement	NQF #0004, HEDIS measure	Adult	(a) The percentage of adolescent and adult members with a new episode of alcohol or other drug (AOD) dependence who received initiation of AOD treatment within 14 days. (b) The percentage of adolescent and adult members with a new episode of alcohol or other drug (AOD) dependence who initiated treatment and had two additional services with a diagnosis of AOD within 30 days of the initiation visit.
Core-6		Avoidance of Antibiotic Treatment for Adults with Acute Bronchitis	NQF #0058, HEDIS measure	Adult	The percentage of adults 18-64 years with a diagnosis of acute bronchitis who were not dispensed an antibiotic.
Core-7		Chlamydia Screening in Women	NQF #0033, HEDIS measure	Adult and Pediatric	The percentage of women 16-24 years who were identified as sexually active and who had at least one test for chlamydia during the measurement period.
Core-8		Developmental Screening in the First Three Years of Life	NQF #1448	Pediatric	The percentage of children screened for risk of developmental, behavioral, and social delays using a standardized screening tool in the 12 months preceding their first, second, or third birthday.
Core-10	MSSP-9	Ambulatory Sensitive Condition Admissions: Chronic Obstructive Pulmonary Disease or Asthma in Older Adults	NQF, AHRQ (Prevention Quality Indicator (PQI) #5)	Adult	All discharges with an ICD-9-CM principal diagnosis code for COPD or asthma in adults ages 40 years and older, for ACO assigned or aligned Medicare fee-for-service (FFS) beneficiaries with COPD or asthma. This is an observed rate of discharges per 1,000 members.
Core-11	MSSP-20	Mammography / Breast Cancer Screening	NQF #2372, HEDIS measure	Adult	The percentage of women 50-74 years who had a mammogram to screen for breast cancer in the last two years.
Core-12		Rate of Hospitalization for Ambulatory Care Sensitive Conditions: PQI Chronic Composite	NQF, AHRQ (Prevention Quality Indicator (PQI) Chronic Composite)	Adult	Prevention Quality Indicators' (PQI) overall composite per 1,000 population, ages 18 years and older; includes admissions for one of the following conditions: diabetes with short-term complications, diabetes with long-term complications, uncontrolled diabetes without complications, diabetes with lower-extremity amputation, chronic obstructive pulmonary disease, asthma, hypertension, heart failure, angina without a cardiac procedure, dehydration, bacterial pneumonia, or urinary tract infection.

Table 6. ACO Measure Reference Table, Continued

VT Measure ID	Medicare Shared Savings Program Measure ID	Measure Name	Nationally Recognized/ Endorsed	Included in HSA Profile?	Measure Description
Core-13		Appropriate Testing for Children with Pharyngitis	NQF #0002	Pediatric	Percentage of children 2-18 years who were diagnosed with pharyngitis, dispensed an antibiotic and received a group A strep test for the episode.
Core-14		Childhood Immunization Status (Combo 10)	NQF #0038, HEDIS measure	No	The percentage of children 2 years who had each of nine key vaccinations (e.g., MMR, HiB, HepB, etc.).
Core-15		Pediatric Weight Assessment and Counseling	NQF #0024	No	The percentage of members 3-17 years who had an outpatient visit with a PCP or OB/GYN and who had evidence of BMI percentile documentation, counseling for nutrition, and counseling for physical activity.
Core-17	MSSP-27	Diabetes Mellitus: Hemoglobin A1c Poor Control (>9%)	NQF #0059, NCQA	Adult	Percentage of members 18-75 years with diabetes whose HbA1c was in poor control >9%.
Core-18	MSSP-19	Colorectal Cancer Screening	NQF #0034, NCQA HEDIS measure	No	The percentage of members 50-75 years who had appropriate screening for colorectal cancer.
Core-19	MSSP-18	Depression Screening and Follow-Up	NQF #0418, CMS	No	The percentage of members 12 years and older who had negative screening or positive screening for depression completed in the measurement year with an age-appropriate standardized tool. Follow-up for positive screening must be documented same day as screening.
Core-20	MSSP-16	Adult Weight Screening and Follow-Up	NQF #0421, CMS	No	The percentage of members 18 years and older who had BMI calculated during the last visit in the measurement year or within the prior 6 months. In cases where the BMI is abnormal, a follow-up plan must be documented during the visit the BMI was calculated or within the prior 6 months.
Core-21		Access to Care Composite	NCQA	No	NCQA Survey - percentage of members who could get appointments or answers to questions from providers when needed.
Core-22		Communication Composite	NCQA	No	NCQA Survey - percentage of members who felt they received good communication from providers.
Core-23		Shared Decision-Making Composite	NCQA	No	NCQA Survey - percentage of members whose provider helped them make decisions about prescription medications.
Core-24		Self-Management Support Composite	NCQA	No	NCQA Survey - percentage of members whose provider talked to them about specific health goals and barriers.
Core-25		Comprehensiveness Composite	NCQA	No	NCQA Survey - percentage of members whose provider talked to them about depression, stress, and other mental health issues.
Core-26		Office Staff Composite	NCQA	No	NCQA Survey - percentage of members who found the clerks and receptionists at their provider's office to be helpful and courteous.
Core-27		Information Composite	NCQA	No	NCQA Survey - percentage of members who received information from their provider about what to do if care was needed in the off hours and reminders between visits.

Table 6. ACO Measure Reference Table, Continued

VT Measure ID	Medicare Shared Savings Program Measure ID	Measure Name	Nationally Recognized/ Endorsed	Included in HSA Profile?	Measure Description
Core-28		Coordination of Care Composite	NCQA	No	NCQA Survey - percentage of members whose providers followed-up about test results, seemed informed about specialty care, and talked at each visit about prescription medication.
Core-29		Specialist Composite	NCQA	No	NCQA Survey - percentage of members who found it easy to get appointments with specialists and who found that their specialist seemed to know important information about their medical history.
Core-30		Cervical Cancer Screening	NQF #0032, HEDIS measure	Adult	The percentage of females 21-64 years who received one or more PAP tests to screen for cervical cancer in the measurement year or two years prior to the measurement year.
Core-31	MSSP-30	Ischemic Vascular Disease (IVD): Use of Aspirin or Another Antithrombotic	NQF #0068, NCQA	No	Percentage of members 18 years and older with IVD who had documentation of using aspirin or another antithrombotic during the measurement year.
Core-35	MSSP-14	Influenza Vaccination	NQF #0041, AMA-PCPI	Adult	Percentage of members 6 months and older with an outpatient visit between October and March who received an influenza vaccine.
Core-36	MSSP-17	Tobacco Use Assessment and Cessation Intervention	NQF #0028, AMA-PCPI	No	Percentage of members 18 years and older who had a negative tobacco screen or positive tobacco screen with cessation intervention in the two years prior to the measurement year.
Core-38	MSSP-32	Drug Therapy for Lowering LDL Cholesterol	NQF #0074	No	Percentage of members 18 years and older with a diagnosis of CAD and an outpatient visit in the measurement year whose LDL-C <100 mg/dL or LDL-C ≥100 mg/dL and who received a prescription of a statin in the measurement year.
Core-38	MSSP-33	ACE Inhibitor or ARB Therapy for Members with CAD and Diabetes and/or Left Ventricular Systolic Dysfunction (LVSD)	NQF #0066	No	Percentage of members 18 years and older with a diagnosis of CAD and a Left Ventricular Ejection Fraction (LVEF) < 40% or diagnosis of CAD and diabetes who received a prescription of ACE/ARB medication in the measurement year.
Core-39	MSSP-28	Percent of Beneficiaries With Hypertension Whose BP < 140/90 mmHg	NQF #0018, NCQA HEDIS measure	Adult	Percentage of members 18-85 years with hypertension whose BP was in control <140/90 mmHg.
Core-40	MSSP-21	Screening for High Blood Pressure and Follow-Up Plan Documented	Not NQF-endorsed; MSSP	No	Percentage of members 18 years and older seen during the measurement period who were screened for high blood pressure and a recommended follow-up plan is documented based on the current blood pressure reading as indicated.
Core-47	MSSP-13	Falls: Screening for Fall Risk	NQF #0101	No	Percentage of members 65 years and older who had any type of falls screening in the measurement year.
Core-48	MSSP-15	Pneumonia Vaccination (Ever Received)	NQF #0043	Adult	The percentage of members 65 years and older who had documentation of ever receiving a pneumonia vaccine.
Core-53		Diabetes Care Two-Part Composite	NQF #0059 and #0055	Adult	The percentage of members 18-75 years with diabetes who have a valid HbA1c less than or equal to 9% and who received an eye exam for diabetic retinal disease during the measurement year.
	MSSP-1	CG CAHPS: Getting Timely Care, Appointments, and Information	NQF #0005, AHRQ	No	CMS Survey - Getting Timely Care, Appointments, and Information
	MSSP-2	CG CAHPS: How Well Your Doctors Communicate	NQF #0005, AHRQ	No	CMS Survey - How Well Your Doctors Communicate

Table 6. ACO Measure Reference Table, Continued

VT Measure ID	Medicare Shared Savings Program Measure ID	Measure Name	Nationally Recognized/ Endorsed	Included in HSA Profile?	Measure Description
	MSSP-3	CG CAHPS: Patients' Rating of Doctor	NQF #0005, AHRQ	No	CMS Survey - Patients' Rating of Doctor
	MSSP-4	CG CAHPS: Access to Specialists	NQF #0005, AHRQ	No	CMS Survey - Access to Specialists
	MSSP-5	CG CAHPS: Health Promotion and Education	NQF #0005, AHRQ	No	CMS Survey - Health Promotion and Education
	MSSP-6	CG CAHPS: Shared Decision Making	NQF #0005, AHRQ	No	CMS Survey - Shared Decision Making
	MSSP-7	CG CAHPS: Health Status / Functional Status	NQF #0006, AHRQ	No	CMS Survey - Health Status/Functional Status
	MSSP-8	Risk-Standardized, All Condition Readmission	CMS, not submitted to NQF (adapted from NQF #1789)	No	All discharges with an ICD-9-CM principal diagnosis code for COPD or asthma in adults ages 40 years and older, for ACO assigned or aligned Medicare fee-for-service (FFS) beneficiaries with COPD or asthma. This is an observed rate of discharges per 1,000 members.
	MSSP-10	Ambulatory Sensitive Condition Admissions: Congestive Heart Failure	NQF #0277, AHRQ (Prevention Quality Indicator (PQI) #8)	Adult	All discharges with an ICD-9-CM principal diagnosis code for CHF in adults ages 18 years and older, for ACO assigned or aligned Medicare fee-for-service (FFS) beneficiaries with CHF. This is an observed rate of discharges per 1,000 members.
	MSSP-11	Percent of Primary Care Physicians who Successfully Qualify for an EHR Program Incentive Payment	CMS EHR Incentive Program Reporting	No	Percentage of Accountable Care Organization (ACO) primary care physicians (PCPs) who successfully qualify for either a Medicare or Medicaid Electronic Health Record (EHR) Program incentive payment.
	MSSP-12	Medication Reconciliation: Reconciliation After Discharge from an Inpatient Facility	NQF #0554	No	Percentage of members 65 years and older who were discharged from any inpatient facility in the measurement year and had an outpatient visit within 30 days of the discharge who had documentation in the outpatient medical record of reconciliation of discharge medications with current outpatient medications during a visit within 30 days of discharge.
	MSSP-24	Diabetes: Blood Pressure Control		Adult	Percentage of members 18-75 years with diabetes who had blood pressure <140/90 mmHg at most recent visit.
	MSSP-25	Diabetes: Tobacco Non-Use		Adult	Percentage of members 18-75 years with diabetes who were identified as a non-user of tobacco in measurement year.
	MSSP-31	Heart Failure: Beta-Blocker Therapy for Left Ventricular Systolic Dysfunction (LVSD)	NQF #0083	No	Percentage of members 18 years and older with a diagnosis of heart failure who also had LVSD (LVEF < 40%) and who were prescribed beta-blocker therapy.
		Comprehensive Diabetes Care: Eye Exams for Diabetics	NQF #0055, HEDIS measure	Adult	Percentage of members with diabetes 18-75 years who received an eye exam for diabetic retinal disease during the measurement year.
M&E-3		Comprehensive Diabetes Care: Medical Attention for Nephropathy	NQF #0062, HEDIS measure	Adult	Percentage of members with diabetes 18-75 years who received a nephropathy screening test during the measurement year.

The following tables provide risk-adjusted rates for selected quality measures, which are not represented in the preceding figures.

Table 7. Risk-Adjusted Quality Measures: Developmental Screening in First 3 Years of Life (Core-8)

HSA	Jul. 2014-Jun. 2015		Jan. 2015-Dec. 2015		Trend
	Rate %	N	Rate %	N	Rate Difference
Barre	49.7%	1,058	54.1%	1,288	4.4%
Bennington	36.5%	596	40.2%	747	3.7%
Brattleboro	41.5%	556	45.7%	738	4.2%
Burlington	54.8%	2,726	58.8%	3,519	3.9%
Middlebury	48.1%	581	52.4%	711	4.4%
Morrisville	28.5%	429	34.4%	515	6.0%
Newport	26.3%	355	28.1%	500	1.8%
Randolph	25.7%	293	33.7%	283	8.0%
Rutland	41.2%	1,040	42.5%	1,254	1.4%
Springfield	37.4%	425	42.8%	520	5.5%
St Albans	43.0%	935	47.8%	1,195	4.8%
St Johnsbury	32.1%	506	39.2%	642	7.0%
White River Jct	47.8%	387	50.9%	697	3.2%

* Cells with less than 11 in the numerator or less than 30 in the denominator are left blank due to either insufficient data or confidentiality requirements.

Table 8. Risk-Adjusted Quality Measures: Adolescent Well-Care Visits (Core-2)

HSA	Jul. 2014-Jun. 2015		Jan. 2015-Dec. 2015		Trend
	Rate %	N	Rate %	N	Rate Difference
Barre	50.6%	4,591	50.7%	4,591	0.2%
Bennington	48.6%	2,520	48.1%	2,496	-0.4%
Brattleboro	49.4%	2,038	49.3%	2,132	-0.1%
Burlington	50.5%	10,276	50.6%	10,847	0.1%
Middlebury	49.9%	2,487	49.7%	2,485	-0.3%
Morrisville	48.2%	1,890	47.5%	1,958	-0.6%
Newport	47.6%	1,612	46.4%	1,762	-1.2%
Randolph	49.9%	968	48.4%	920	-1.5%
Rutland	49.8%	4,107	48.7%	4,173	-1.1%
Springfield	48.3%	1,809	47.4%	1,817	-1.0%
St Albans	49.2%	3,359	48.8%	3,485	-0.4%
St Johnsbury	48.6%	1,912	48.0%	2,074	-0.6%
White River Jct	50.5%	2,048	50.3%	2,892	-0.2%

* Cells with less than 11 in the numerator or less than 30 in the denominator are left blank due to either insufficient data or confidentiality requirements.

Patient Experience Survey: Access to Care Composite

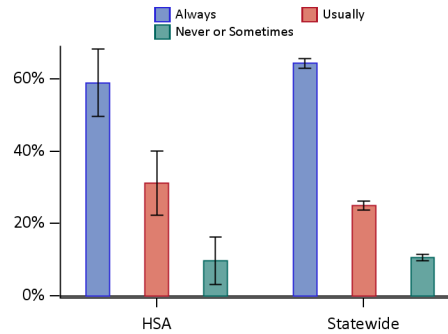


Figure 15: Presents the composite proportion, including the 95% confidence interval, of the given response to the questions associated with Access to Care on the behalf of children less than 18 years. The composite proportion is given by the average of the corresponding proportions of the associated questions.

Table 9. Patient Experience Survey: Access to Care Questions

Question & Answer		HSA			Statewide		
		N	%	Error (+/-)	N	%	Error (+/-)
In the last 12 months, when you phoned this provider's office after regular office hours, how often did you get an answer to your medical question as soon as you needed?	Always				291	76%	5%
	Usually				291	16%	4%
	Never or Sometimes				291	8%	3%
In the last 12 months, when you phoned this provider's office to get an appointment for care you needed right away, how often did you get an appointment as soon as you needed?	Always	45	62%	15%	1,168	70%	3%
	Usually	45	36%	15%	1,168	23%	2%
	Never or Sometimes				1,168	7%	2%
In the last 12 months, when you phoned this provider's office during regular office hours, how often did you get an answer to your medical question that same day?	Always	53	77%	12%	1,096	72%	3%
	Usually				1,096	20%	2%
	Never or Sometimes				1,096	8%	2%
In the last 12 months, when you phoned this provider's office to get an appointment for a check-up or routine care with this provider, how often did you get an appointment as soon as you needed?	Always	81	70%	11%	1,789	65%	2%
	Usually	81	26%	10%	1,789	28%	2%
	Never or Sometimes				1,789	7%	1%
Wait time includes time spent in the waiting room and exam room. In the last 12 months, how often did you see this provider within 15 minutes of your appointment time?	Always	106	35%	10%	2,253	38%	2%
	Usually	106	44%	10%	2,253	38%	2%
	Never or Sometimes	106	21%	8%	2,253	24%	2%

Patient Experience Survey: Communication Composite

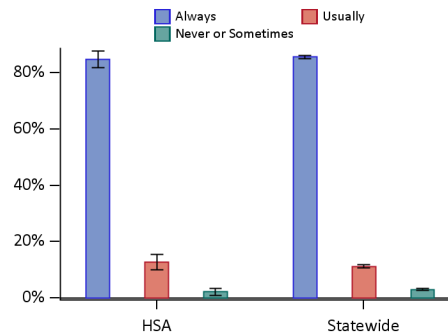


Figure 16: Presents the composite proportion, including the 95% confidence interval, of the given response to the questions associated with Communication on the behalf of children less than 18 years. The composite proportion is given by the average of the corresponding proportions of the associated questions.

Table 10. Patient Experience Survey: Communication Questions

Question & Answer		HSA			Statewide		
		N	%	Error (+/-)	N	%	Error (+/-)
In the last 12 months, how often did this provider give you easy to understand information about these health questions or concerns?	Always	81	85%	8%	1,709	86%	2%
	Usually				1,709	12%	2%
	Never or Sometimes				1,709	3%	1%
In the last 12 months, how often did this provider seem to know the important information about your medical history?	Always	106	80%	8%	2,236	76%	2%
	Usually	106	17%	8%	2,236	18%	2%
	Never or Sometimes				2,236	6%	1%
In the last 12 months, how often did this provider spend enough time with you?	Always	106	84%	7%	2,246	85%	1%
	Usually	106	12%	7%	2,246	11%	1%
	Never or Sometimes				2,246	3%	1%
In the last 12 months, how often did this provider listen carefully to you?	Always	107	86%	7%	2,244	88%	1%
	Usually	107	12%	7%	2,244	10%	1%
	Never or Sometimes				2,244	2%	1%
In the last 12 months, how often did this provider show respect for what you had to say?	Always	107	87%	7%	2,249	91%	1%
	Usually	107	11%	6%	2,249	7%	1%
	Never or Sometimes				2,249	3%	1%
In the last 12 months, how often did this provider explain things in a way that was easy to understand?	Always	107	87%	7%	2,260	88%	1%
	Usually	107	12%	7%	2,260	10%	1%
	Never or Sometimes				2,260	2%	1%

Patient Experience Survey: Comprehensiveness Developmental Composite

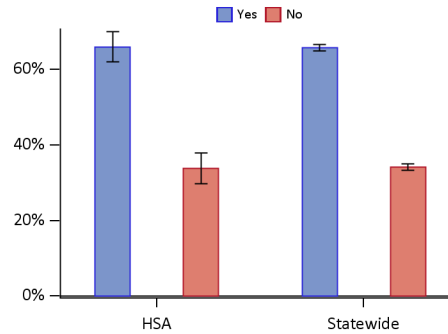


Figure 17: Presents the composite proportion, including the 95% confidence interval, of the given response to the questions associated with Developmental Comprehensiveness on the behalf of children less than 18 years. The composite proportion is given by the average of the corresponding proportions of the associated questions.

Table 11. Patient Experience Survey: Comprehensiveness Developmental Questions

Question & Answer		HSA			Statewide		
		N	%	Error (+/-)	N	%	Error (+/-)
In the last 12 months, did you and anyone in this provider’s office talk about your child’s learning ability?	Yes	106	55%	10%	2,239	49%	2%
	No	106	45%	10%	2,239	51%	2%
In the last 12 months, did you and anyone in this provider’s office talk about your child’s moods and emotions?	Yes	107	64%	10%	2,236	67%	2%
	No	107	36%	10%	2,236	33%	2%
In the last 12 months, did you and anyone in this provider’s office talk about the kinds of behaviors that are normal for your child at this age?	Yes	107	64%	10%	2,239	71%	2%
	No	107	36%	10%	2,239	29%	2%
In the last 12 months, did you and anyone in this provider’s office talk about how your child gets along with others?	Yes	107	65%	9%	2,235	62%	2%
	No	107	35%	9%	2,235	38%	2%
In the last 12 months, did you and anyone in this provider’s office talk about how your child’s body is growing?	Yes	107	81%	8%	2,245	80%	2%
	No	107	19%	8%	2,245	20%	2%

Patient Experience Survey: Comprehensiveness Prevention Questions

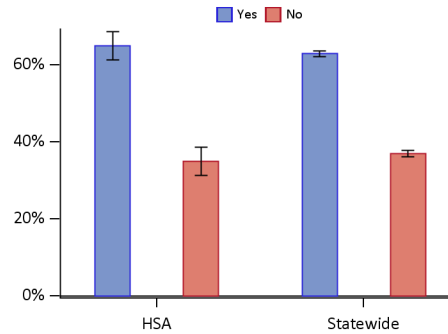


Figure 18: Presents the composite proportion, including the 95% confidence interval, of the given response to the questions associated with Prevention Comprehensiveness on the behalf of children less than 18 years. The composite proportion is given by the average of the corresponding proportions of the associated questions.

Table 12. Patient Experience Survey: Comprehensiveness Prevention Questions

Question & Answer		HSA			Statewide		
		N	%	Error (+/-)	N	%	Error (+/-)
In the last 12 months, did anyone in this provider’s office give you information about how to keep your child from getting injured?	Yes	106	55%	10%	2,228	52%	2%
	No	106	45%	10%	2,228	48%	2%
In the last 12 months, did you and anyone in this provider’s office talk about whether there are any problems in your household that might affect your child?	Yes	107	52%	10%	2,240	53%	2%
	No	107	48%	10%	2,240	47%	2%
In the last 12 months, did you and anyone in this provider’s office talk about things you can do to keep your child from getting injured?	Yes	107	59%	10%	2,241	60%	2%
	No	107	41%	10%	2,241	40%	2%
In the last 12 months, did you and anyone in this provider’s office talk about how much time your child spends on a computer and in front of a TV?	Yes	107	64%	10%	2,232	59%	2%
	No	107	36%	10%	2,232	41%	2%
In the last 12 months, did you and anyone in this provider’s office talk about how much or what kind of exercise your child gets?	Yes	107	79%	8%	2,246	74%	2%
	No	107	21%	8%	2,246	26%	2%
In the last 12 months, did you and anyone in this provider’s office talk about how much or what kind of food your child eats?	Yes	107	81%	8%	2,240	80%	2%
	No	107	19%	8%	2,240	20%	2%

Patient Experience Survey: Coordinated Care Composite

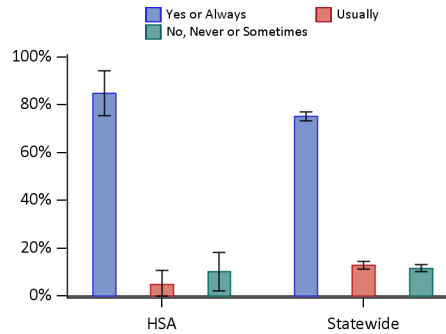


Figure 19: Presents the composite proportion, including the 95% confidence interval, of the given response to the questions associated with Coordinated Care on the behalf of children less than 18 years. The composite proportion is given by the average of the corresponding proportions of the associated questions.

Table 13. Patient Experience Survey: Coordinated Care Questions

Question & Answer		HSA			Statewide		
		N	%	Error (+/-)	N	%	Error (+/-)
In the last 12 months, how often did the provider named in Question 1 seem informed and up-to-date about the care you got from specialists?	Yes or Always	16	75%	24%	514	58%	4%
	Usually				514	28%	4%
	No, Never or Sometimes				514	14%	3%
In the last 12 months, when this provider ordered a blood test, x-ray or other test for you, how often did someone from this provider's office follow up to give you those results?	Yes or Always	24	83%	17%	511	78%	4%
	Usually				511	11%	3%
	No, Never or Sometimes				511	11%	3%
In the last 12 months, did you and anyone in this provider's office talk at each visit about all the prescription medicines you were taking?	Yes or Always	57	96%	4%	1,102	90%	2%
	No, Never or Sometimes				1,102	10%	2%

Patient Experience Survey: Office Staff Composite

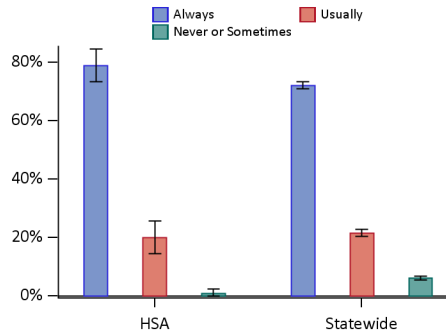


Figure 20: Presents the composite proportion, including the 95% confidence interval, of the given response to the questions associated with Office Staff on the behalf of children less than 18 years. The composite proportion is given by the average of the corresponding proportions of the associated questions.

Table 14. Patient Experience Survey: Office Staff Questions

Question & Answer		HSA			Statewide		
		N	%	Error (+/-)	N	%	Error (+/-)
In the last 12 months, how often were the clerks and receptionists at this provider’s office as helpful as you thought they should be?	Always	107	73%	9%	2,251	66%	2%
	Usually	107	25%	9%	2,251	26%	2%
	Never or Sometimes				2,251	8%	1%
In the last 12 months, how often did clerks and receptionists at this provider’s office treat you with courtesy and respect?	Always	107	85%	7%	2,252	78%	2%
	Usually	107	15%	7%	2,252	17%	2%
	Never or Sometimes				2,252	5%	1%

Patient Experience Survey: Self Management Composite

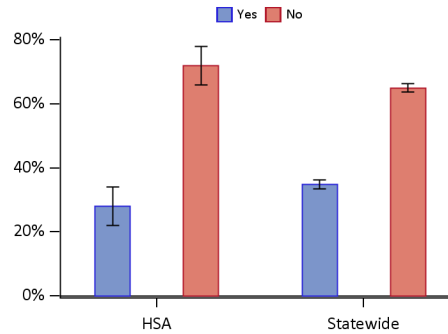


Figure 21: Presents the composite proportion, including the 95% confidence interval, of the given response to the questions associated with Self Management on the behalf of children less than 18 years. The composite proportion is given by the average of the corresponding proportions of the associated questions.

Table 15. Patient Experience Survey: Self Management Questions

Question & Answer		HSA			Statewide		
		N	%	Error (+/-)	N	%	Error (+/-)
In the last 12 months, did anyone in this provider's office ask you if there are things that make it hard for you to take care of your health?	Yes	107	15%	7%	2,238	25%	2%
	No	107	85%	7%	2,238	75%	2%
In the last 12 months, did anyone in this provider's office talk with you about specific goals for your health?	Yes	107	41%	10%	2,233	44%	2%
	No	107	59%	10%	2,233	56%	2%

Patient Experience Survey: Specialist Composite

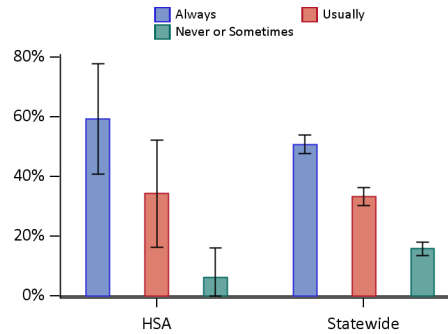


Figure 22: Presents the composite proportion, including the 95% confidence interval, of the given response to the questions associated with Specialists on the behalf of children less than 18 years. The composite proportion is given by the average of the corresponding proportions of the associated questions.

Table 16. Patient Experience Survey: Specialist Questions

Question & Answer		HSA			Statewide		
		N	%	Error (+/-)	N	%	Error (+/-)
In the last 12 months, how often was it easy to get appointments with specialists?	Always				512	49%	4%
	Usually				512	34%	4%
	Never or Sometimes				512	18%	3%
In the last 12 months, how often did the specialist you saw most seem to know the important information about your medical history?	Always				495	53%	4%
	Usually				495	33%	4%
	Never or Sometimes				495	14%	3%

Patient Experience Survey: Information

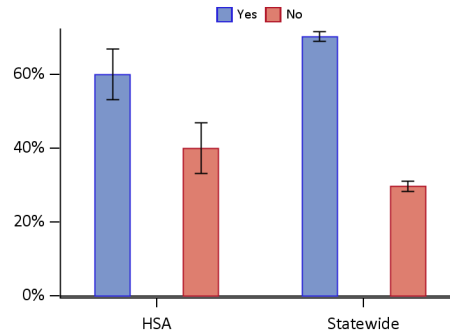


Figure 23: Presents the composite proportion, including the 95% confidence interval, of the given response to the questions associated with Information on the behalf of children less than 18 years. The composite proportion is given by the average of the corresponding proportions of the associated questions.

Table 17. Patient Experience Survey: Information Questions

Question & Answer		HSA			Statewide		
		N	%	Error (+/-)	N	%	Error (+/-)
Some offices remind patients between visits about tests, treatment or appointments. In the last 12 months, did you get any reminders from this provider's office between visits?	Yes	104	56%	10%	2,240	60%	2%
	No	104	44%	10%	2,240	40%	2%
Did this provider's office give you information about what to do if you needed care during evenings, weekends, or holidays?	Yes	106	64%	10%	2,234	80%	2%
	No	106	36%	10%	2,234	20%	2%